

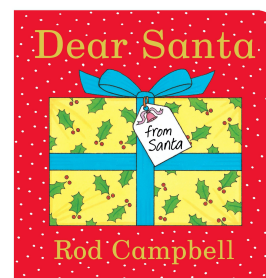
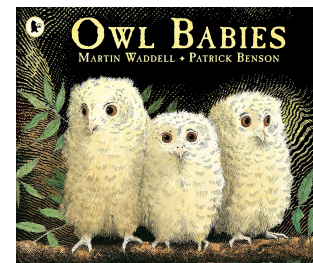
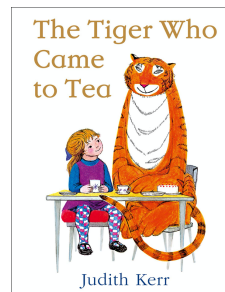
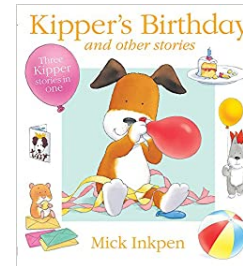
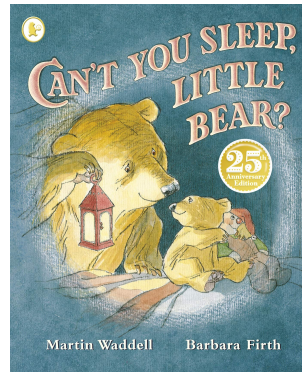
Foundation Stage: Light and Dark Knowledge Builder

This half term we will be learning all about different types of celebrations that happen around the world. We hope that you will enjoy telling us about all the different celebrations that you have taken part in with your families!

As part of being a scientist in this topic we will also be learning about animals that are nocturnal and diurnal. We can't wait to get started!

Key words

- **Nocturnal animal** – an animal that sleeps during the day and is active at night
- **Diurnal animal** – an animal that is awake and active during the day and sleeps at night
- **Festival** – a religious celebration
- **Celebration** – a family gathering for an important day or event
- **Religion** – a belief e.g. Christians
- **Night** – when the sky is dark
- **Day** – when the sky is light
- **Sunrise** – when the sun appears in the morning
- **Sunset** – when daylight fades in an evening
- **Party** – when friends and family celebrate an event



Types of celebrations



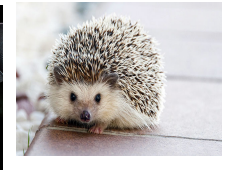
Nocturnal animals



owl

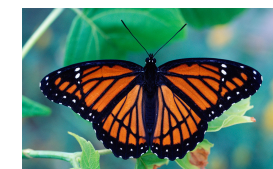


bat



hedgehog

Diurnal animals



butterfly



bee



dog