

Welcome to the Monthly Bulletin

The next issue will be out in October

September 2022



We are delighted to welcome all families to school for this academic year.

It has been an absolute delight to welcome all the children into school. We have been so proud of them all coming into school independently and delighted by the lovely smiles they have greeted us with. They seem very settled in class and we are enjoying getting to know them and hear all about their summer holidays. . Thank you so much for preparing them so well. All staff members strive to build positive relationships with all children to support their academic and social and emotional growth.

We are looking forward to a happy and successful year where al children love learning in a positive, safe, warm and caring environment.



16.9.22 Reading volunteer workshop

28.9.22 Individual school photos

4.10.22 Toys workshop for Y1 pupils

11.1.22 Macmillan coffee morning 9.00-10.00

18.10 22 Flu vaccines

21.10.22 Inset day

Home learning

FS:- home learning will be set on Google Classroom each week on Mondays. A home learning book to complete the work in. Home learning can be sent into school in the purple book or photographed and attached to google classroom Home learning will be linked to the learning in class e.g. matching numerals to the correct number of objects, investigating floating and sinking.

KS1:- home learning will be sent via Google Classroom each week Mondays. Children will receive maths facts to practise for instant recall and a set of spellings to learn. A home learning book will be provided for the children to work in. Home learning can be sent into school in the purple book or photographed and attached to google classroom. Children can also access Purple Mash, Spelling Shed and TT Rockstars at home to support this. Home learning will be followed up with the children in class in the form of weekly assessments and transfer into ongoing work.

Reading

Little and often is the best approach. Research shows that children who regularly read **at least 3 times a week** and are read to on a regular basis make the most progress each year,

Reading books will be changed on **Mondays**. Children will get a phonetically decodable book (RWInc) which they should practise reading as often as possible. The children will also get a book for pleasure matched to their reading ability. Rising Stars and Oxford Owl Read, Write Inc online reading libraries will continue to be available.

Reading diaries: Please complete each time you read with your child and then send into school each **Monday**.

P.E.

On your child's allocated PE days please make sure that they come in **jogging bottoms or leggings** and **sports shoes** with a school t shirt and sweatshirt or cardigan as we will not be changing for PE.

PE days as follows

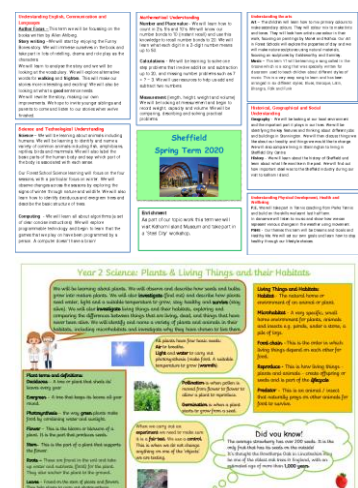
Class 1	Monday and Thursday
Class 2	Monday and Tuesday
Class 3	Wednesday and Thursday
Class 4	Monday and Wednesday
Class 5	Tuesday and Wednesday
Class 6	Monday and Tuesday

If your child is not in PE clothing they will be unable to participate in the lesson.

Curriculum planners can be found on the school website and google classroom. These give you details of what the children are learning so that you can reinforce this at home.

Knowledge builders; these are used with the children in class but will help to support your child's learning if you discuss them together. These can be found on the school website and google classroom.

The curriculum presentations from July are available on the school website.





Please label ALL items of clothing and property clearly with your child's name.

If your child loses an item of clothing this will be returned to them if named or stored on the rail in the cloakroom for a limited period of time.

Given the unpredictable nature of our weather please can you ensure your child has a coat at school every day. We always go outside to play or to the dining room.

Please make sure water bottles are filled before school with water only.

Thank you in advance.

Timing for the School Day

Please make sure your child arrives on time to school, thank you

Doors open 8.40 am for Y1/2 8.50 for FS

Register is 8.50 am Y1/Y2 9.00 for FS

Playtime 10.30 – 10.45am

Lunch is 11.45 – 12.45 pm for Foundation Stage

12.00 – 1.00 pm Y1 & Y2

Afternoon physical activity of 10 minutes – flexible to suit classes

Home time 3.20pm

NB Class 5 come in via the red door but exit at home time via the white door near the football area/class 6

Collecting children from school.

If someone other than a parent is collecting your child from school please could you mention this to a member of staff in the morning or email staff / phone school. Please could you also let us know if your child will be attending an after-school club (other than Busy Bees). If your child has set days to attend please inform us of those and then you would just need to update us with any changes to arrangements.

Many thanks



Stannington Infant School's



Breakfast and After School Club

Breakfast Club

Monday to Friday 7.30 – 8.50am

After School Club

Monday to Friday 3.15 – 5.45pm

Our aim is to provide excellent wrap around provision within a safe and happy environment.

The sessions are charged at £5 for breakfast club which is open from 7.30 am. Each child will receive a healthy breakfast and a drink with quiet space and activities so they are ready for the start of school. Children will be accompanied to the classroom 8.40 am ready for registration.

After school club is available from 3.15pm until 5.45pm, the sessions are charged at £8.50. The children will have access to both indoor and outdoor facilities, making use of our wonderful school grounds. Indoor activities include craft, colouring, baking, whilst outdoors children will have balance bikes, gardening or sporting fun. A healthy snack will be available e.g. fruit or vegetables, toast, smoothies or milk.

To book a place please email

busybees@stannington.sheffield.sch.uk



School Terms and Holidays

Academic Year 2022/2023

*Please make a note of the school calendar to avoid requesting term time leave.
Please share with other family members who may be involved in arranging holidays.*

Term Dates (All dates inclusive)

Autumn	Thursday 1 September 2022	Friday 16 December 2022
Spring	Tuesday 3 January 2023	Friday 31 March 2023
Summer	Tuesday 17 April 2023	Friday 21 July 2023

Holiday Periods

School re-opens	Monday 5 September 2022	
Half Term	Monday 24 October 2022	Friday 28 October 2022
Christmas	Monday 19 December 2022	Monday 2 January 2023
Spring Half Term	Monday 13 February 2023	Friday 17 February 2023
Easter	Monday 3 April 2023	Friday 14 April 2023
May Day	Monday 1 May 2023	
Spring Bank	Monday 29 May 2023	Friday 2 June 2023
Summer	School closes at the end of the day on Friday 21 July 2023	
SATs Weeks	First three weeks May 2023	

Staff Training Days

Autumn	Thursday 1 September 2022 Friday 2 September 2022 Friday 21 October 2022	
Spring	Tuesday 3 January 2023	
Summer	Monday 5 June 2023	

Contact us

Stannington Infant School Stannington Road, Sheffield, S6 6AN

Telephone: 0114 2344401

Fax: 0114 2334724

Email: enquiries@stannington.sheffield.sch.uk

Website: www.stanningtoninfants.co.uk

Headteacher: Sarah Binns

Deputy Headteacher: Liz Harris

Chair of Governors: Elizabeth Tunnard