

Welcome to the Monthly Bulletin

The next issue will be out in October

# September 2023



Welcome everyone! We have had a super first week back in school. The Year 1 and 2 children have settled into their new classes really well - they have been working very hard and getting to know the teachers well. We have been so impressed by their independence and confidence to approach new learning and ways of working in their new classes.

A special welcome too to our new Foundation Stage children and their families! The children have been brilliant coming into school for the first time; we never underestimate what a big step this is for children (and their families!) and we are so proud of how independent the children have been this week. They have enjoyed learning and playing in their classrooms, making new friends, playtime outside in the playground and having lunch in the dining room.

Well Done Everyone!

Dates for  
the Diary:

7/11.9.23 at 3.30pm Come and See classroom session.

14.9.23 Reading Volunteer workshop at 9.30am school hall.

5.10.23 Individual school photos (unfortunately this year we cannot accommodate younger or older siblings )

29.9.23 Macmillan coffee morning 9-10.00

20.10.23 Inset day

23.10.23 Half term

2.11.23 Flu vaccines



### Home learning

This will begin week commencing 18.9.23

FS:- A sound book will be sent home with your child for you to practise at home. Later this term a reading book will be sent home. This book corresponds to their phonic level in school. Please return these weekly on a Monday together with the reading diary.

KS1:- home learning will be sent via Google Classroom each week on Mondays. Children will receive maths facts to practise for instant recall; these will be set for the whole half term and need revisiting throughout this time. A list of spellings will be set weekly. A home learning book to practise the work in, if you wish, will also be sent home. Work completed on paper can be photographed and uploaded to Google classroom. Children can also access Purple Mash and Spelling Shed at home. Home learning will be followed up with the children in class in the form of weekly assessments and transfer into ongoing work.

### Reading

Little and often is the best approach. Research shows that children who regularly read **at least 5 times a week** and are read to on a regular basis make the most progress each year.

Reading books will be changed on **Mondays**. Children will get a phonetically decodable book (RWInc) which they should practise reading as often as possible, we advocate 5 times per week. Please be aware that these will only be changed when the current book is returned to school. The children will also get a book for pleasure matched to their reading ability. Oxford Owl Read, Write Inc online reading library will be available. Please look out for a separate reading letter with more detail coming next week.

**Reading diaries:** Please complete each time you read with your child and then send into school each **Monday**.

### P.E.

On your child's allocated PE days please make sure that they come in **jogging bottoms or leggings and sports shoes** with a school t shirt and sweatshirt or cardigan as we will not be changing for PE.

### PE days as follows

- Class 1 Monday and Tuesday
- Class 2 Monday and Tuesday
- Class 3 Wednesday and Thursday
- Class 4 Monday and Wednesday
- Class 5 Tuesday and Wednesday
- Class 6 Monday and Tuesday

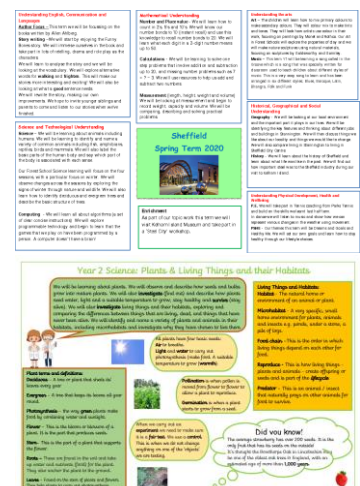
**If your child is not in PE clothing they will be unable to participate in the lesson.**

From week 3:- **Curriculum planners** can be found on the school website and google classroom. These give you details of what the children are learning so that you can reinforce this at home.

**Knowledge builders;** these are used with the children in class but will help to support your child's learning if you discuss them together. These can be found on the school website and google classroom.

The curriculum presentations from July are available on the school website.

Any questions please ask a member of staff.





Please **label ALL** items of clothing and property clearly with your child's name.

If your child loses an item of clothing this will be returned to them if named or stored on the trolley in the cloakroom for a limited period of time. Please feel free to come in before or after school to look for items.

Given the unpredictable nature of our weather please can you ensure your child has a coat at school every day. We always go outside to play or to the dining room.

Please make sure water bottles are filled before school with water only.

***Thank you in advance.***

## Timing for the School Day

**Please make sure your child arrives on time to school, thank you**

**Doors open 8.40 am for Y1/2    8.50 for FS**

Register is 8.50 am Y1/Y2    9.00 for FS

Playtime 10.30 – 10.45am

Lunch is 11.45 – 12.45 pm for Foundation Stage

12.00 – 1.00 pm Y1 & Y2

Afternoon playtime 2.15pm

**Home time 3.20pm**

### Collecting children from school.

If someone other than a parent is collecting your child from school please could you mention this to a member of staff in the morning or email staff / phone school. Please could you also let us know if your child will be attending an after-school club (other than Busy Bees). If your child has set days to attend please inform us of those and then you would just need to update us with any changes to arrangements.

Many thanks



# Stannington Infant School's



## Breakfast and After School Club

### **Breakfast Club**

Monday to Friday 7.30 – 8.50am

### **After School Club**

Monday to Friday 3.15 – 5.45pm

We provide excellent wrap around provision within a safe and happy environment.

The sessions are charged at £5 for breakfast club which is open from 7.30 am. Each child will receive a healthy breakfast and a drink with quiet space and activities so they are ready for the start of school. Children will be accompanied to the classroom 8.40 am ready for registration.

After school club is available from 3.15pm until 5.45pm, the sessions are charged at £8.50. The children will have access to both indoor and outdoor facilities, making use of our wonderful school grounds. Indoor activities include craft, colouring, baking, whilst outdoors children will have balance bikes, gardening or sporting fun. A healthy snack will be available e.g. fruit or vegetables, toast, smoothies or milk.

**To book a place please email**

[busybees@stannington.sheffield.sch.uk](mailto:busybees@stannington.sheffield.sch.uk)

Please note that spaces are limited so ensure you request a place in plenty of time.



## School Terms and Holidays

### Academic Year 2023/2024

#### Term Dates (All dates inclusive)

<b>Autumn</b>	Monday 4 September 2023	Friday 22 December 2023
<b>Spring</b>	Monday 8 January 2024	Thursday 28 March 2024
<b>Summer</b>	Monday 15 April 2024	Tuesday 23 July 2024

#### Holiday Periods

<b>School re-opens</b>	Tuesday 5 September 2023	
<b>Half Term</b>	Monday 23 October 2023	Friday 27 October 2023
<b>Christmas</b>	Monday 25 December 2023	Friday 5 January 2024
<b>Spring Half Term</b>	Monday 12 February 2024	Friday 16 February 2024
<b>Easter</b>	Friday 29 March 2024	Friday 12 April 2024
<b>May Day</b>	Monday 6 May 2024	
<b>Spring Bank</b>	Monday 27 May 2024	Friday 31 May 2024
<b>Summer</b>	School closes at the end of the day on Friday 19 July 2024	
<b>SATs Weeks</b>	First three weeks May 2024	

#### Staff Training Days

<b>Autumn</b>	Monday 4 September 2023 Friday 20 October 2023 Friday 22 December 2023	
<b>Spring</b>		
<b>Summer</b>	Monday 22 July 2024 Tuesday 23 July 2024	

Contact us .....

Telephone: 0114 2344401

Fax: 0114 2334724

Email: [enquiries@stannington.sheffield.sch.uk](mailto:enquiries@stannington.sheffield.sch.uk)

Website: [www.stanningtoninfants.co.uk](http://www.stanningtoninfants.co.uk)

Stannington Infant School Stannington Road, Sheffield, S6 6AN

Headteacher: Sarah Binns

Deputy Headteacher: Liz Harris

Chair of Governors: Elizabeth Tunnard