



Welcome to the Monthly Newsletter

April 2026

The next issue will be out in May



Welcome back, we hope that everyone had a safe and happy holiday!

Are you keeping up to date with school events?

Don't forget that monthly newsletters are on Parentmail and the school website under the 'parent's tab'

Under the 'news tab' you can see news of school events like educational visits and Eco top tips.



Educational visits

**Top tip – April**  
by Shannon Travis | Apr 6, 2026 | ECCO BLOG, Latest News  
Our top tip for April is to turn off the taps so you are not wasting water. Could you use a water butt to collect rain water?

**Kelham Island trip**  
by Joanne Everts | Mar 15, 2026 | Latest News  
The children visited Kelham Island museum to find out about Sheffield steel. They were immersed into the steel industry, dressing up with flat caps, leather aprons and using large metal tongs to pick up the crucibles. Did you know the crucible theatre is named after...



**Piano Assembly**  
by Liz Harris | Mar 27, 2026 | Latest News, Year 1, Year 2  
Today's assembly has been such a treat. Our

**Easter service at Christchurch**  
by Sarah Birns | Mar 24, 2026 | Foundation Stage, Latest News, Year 1, Year 2  
We were happy to be welcomed to Christchurch on Monday 23rd March for an Easter service. We learnt about the Easter story and Christian symbols. The children sang our favourite Easter songs. Thank you to Elissa, Alison, Nick and all the volunteers.



World Book Day



School events



15.4.26 9.00-9.30 Year 1 phonics meeting for parents  
16.4.26 Class 6 swimming commences  
16.4.26 Local Authority offer date for FS places Sept.26  
08.5.26 Y2s to Butterfly House  
12.5.26 FS height and weight measuring  
14.5.26 Class photos  
18.5.26 Walk to school week  
25.5.26 Half term  
01.6.26 Inset day – children not in school  
02.6.26 Welcome meeting for 2026 new starters  
05.6.26 FS classes Gingerbread Man workshop  
08.6.26 Y1 phonics testing  
15/16/22/23.6 26 cooking sessions with Taylor Shaw  
18.6.26 FS new starter visits (am)  
24.6.26 Dental workshops for all classes  
25.6.26 Pickle ball sessions for all classes  
26.6.26 Y1s to Butterfly House

Stannington Infant School is committed to maximising the achievement of all pupils.

**Good attendance and punctuality are vital if children are to attain their full potential as learners.**

As children start school their patterns and routines of school attendance quickly become habits. Poor routines are hard to disestablish further up the school system. A prevention and early intervention programme that helps to establish good habits can underpin the whole of a child's school career – and potentially their life opportunities. Young children, however, are dependent upon the adults in their life to get them to school regularly and on time.

### **Term time leave**

Please can we remind parents and carers that forms to request term time leave **must be completed prior to the leave being taken.**

<https://www.stanningtoninfants.co.uk/wp-content/uploads/2023/01/Request-for-term-time-leave-form.pdf>

Or call at the school office for a paper copy.

To plan ahead and avoid holidays in term time please use this web link for Sheffield school holidays

<https://www.sheffield.gov.uk/schools-childcare/school-information-term-dates>



Please remember to read little and often with your children at home.

A reminder that Monday is the day to return books and reading diaries please.

The statement "20 is plenty" emphasizes that 20 minutes of reading per day is sufficient for children to reap significant benefits. This short amount of time can lead to increased vocabulary, improved writing skills, and stronger bonds between parents and children.

Here's why 20 minutes of reading a day is beneficial:

- **Vocabulary Expansion:**

Children who read for 20 minutes a day are exposed to a large number of words, contributing to a significant increase in their vocabulary.

- **Improved Writing Skills:**

A larger vocabulary allows children to write more effectively and creatively.

- **Parent-Child Bonding:**

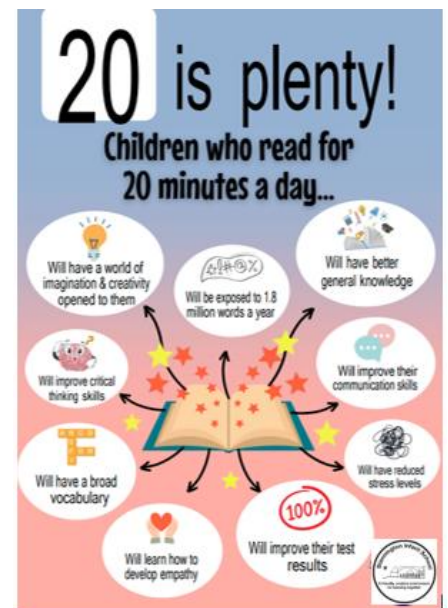
Reading together is a quality time activity that strengthens the parent-child relationship.

- **Development of Empathy and Imagination:**

Reading about different characters and situations helps children develop empathy and imagination.

- **Relaxation and Reduced Stress:**

Reading can be a relaxing and calming activity, especially before bedtime.



**Reminder:- For health and safety reasons we ask that the Trim Trail is not used before or after school starts.**

**Thank you**



# Stannington Infant School's



## Breakfast and After School Club

**Breakfast Club** Monday to Friday 7.30 – 8.50am

**After School Club** Monday to Friday 3.15 – 5.45pm

We provide excellent wrap around provision within a safe and happy environment.

The sessions are charged at £5.50 for breakfast club which is open from 7.30 am. Each child will receive a healthy breakfast and a drink with quiet space and activities so they are ready for the start of school. Children will be accompanied to the classroom 8.40 am ready for registration.

After school club is available from 3.15pm until 5.45pm, the sessions are charged at £9.00. The children will have access to both indoor and outdoor facilities, making use of our wonderful school grounds. Indoor activities include craft, colouring, baking, whilst outdoors children will have balance bikes, gardening or sporting fun. A healthy snack will be available e.g. fruit or vegetables, toast, smoothies or milk.

All bookings must be made using the Parentmail app booking system and you must use the PAY NOW option unless you are using childcare vouchers in which case you may use the PAY LATER option. **All bookings must be paid for upfront** and you will receive a refund if you cancel 48 hours in advance.

We have 20 places and cannot accommodate more children at this time. Places will only be allocated upon receipt of the registration form.



A friendly, creative environment for learning together

## School Terms and Holidays Academic Year 2025/2026

### Term Dates (All dates inclusive)

<b>Autumn</b>	Monday 1 September 2025	Friday 19 December 2025
<b>Spring</b>	Monday 5 January 2026	Friday 27 March 2026
<b>Summer</b>	Monday 13 April 2026	Monday 20 July 2026

### Holiday Periods

<b>School re-opens</b>	Monday 1 September 2025	
<b>Half Term</b>	Monday 27 October 2025	Friday 31 October 2025
<b>Christmas</b>	Monday 22 December 2025	Friday 2 January 2026
<b>Spring Half Term</b>	Monday 16 February 2026	Friday 20 February 2026
<b>Easter</b>	Monday 30 March 2026	Friday 10 April 2026
<b>May Day</b>	Monday 4 May 2026	
<b>Spring Bank</b>	Monday 25 May 2026	Friday 29 May 2026
<b>Summer</b>	School closes at the end of the day on Friday 17 July 2026	

### Staff Training Days

<b>Autumn</b>	Monday 1 September 2025 Friday 24 October 2025	
<b>Spring</b>	Friday 13 February 2026	
<b>Summer</b>	Monday 1 June 2026 Monday 20 July 2026	

